

# GAS

## FLOOR-STANDING GAS CONDENSING BOILERS FOR HEATING ONLY

PROJECT

### IX 145 - 50 and IX 145 - 70 from 5.4 to 70.2 kW



Gas-fired condensing solution  
Compact  
Stainless steel heating body



- Floor-standing boiler, equipped to run on natural gas
- Can be adapted on propane using a conversion kit
- Low pollutant emissions
- Electronic ignition
- Austenitic stainless steel (316 L) coil exchanger**
- Stainless steel fully premixed gas burner, modulating
- Electronic modulation from 1 to 9
- Flame detection using ionisation
- Temperature control and management using 2 CTN thermistors on the flow and return
- Continuously modulating gas valve (in heating mode and DHW production mode)

- Post-circulation, flow control and low water device
- Backlit panel with dropdown menu and clear text. 3 operating modes, easy access to the boiler parameters, malfunction alerts with fault codes, fault history and diagnostic help. Enables management of a DHW circuit and a direct circuit. Can control up to 3 circuits (with control system options).
- Delivery with outdoor temperature sensor
- Packaging: 1 package**

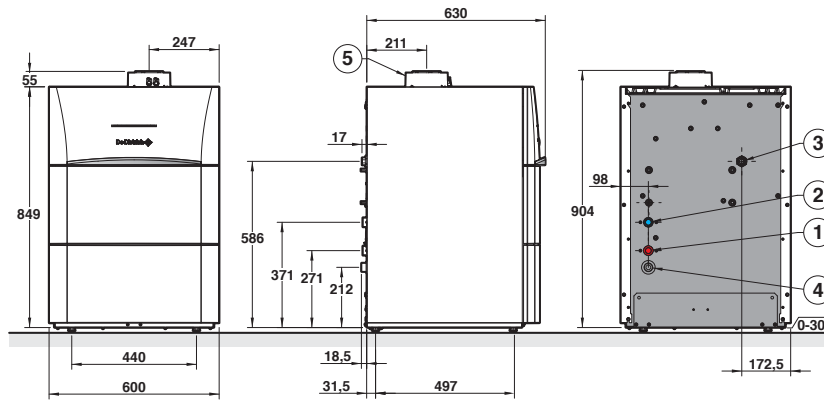
NEW

N° CE 0085CP089

**OPTIONS:** see following pages / **FLUE SYSTEMS:** see following pages

### MAIN DIMENSIONS (mm and inches)

- Heating flow:
    - IX 145-...: G 1"
    - IX 145-... SH: G 1"
    - IX 145-... EP: G 1" 1/4
  - Heating return:
    - IX 145-...: G 1"
    - IX 145-... SH: G 1"
    - IX 145-... EP: G 1" 1/4
  - Power supply gas:
    - IX 145-...: G 3/4"
    - IX 145-... SH: G 1" 1/2
    - IX 145-... EP: G 1"
  - Condensates drain (Ø 22 mm outside)
  - Evacuation of combustion products and air inlet pipe Ø 80/125 mm
- G: External cylindrical threading water tightness by flat gasket.



### TECHNICAL SPECIFICATIONS

#### Condensing

Max. operating temperature: 80°C  
 Max. operating pressure: 4 bar  
 Safety thermostat: 110°C

Power supply: 230 V/50 Hz  
 Protection index: IP X1B  
 NOx classification: 6

Classification: B<sub>23</sub>, B<sub>23P</sub>, B<sub>33</sub>, C<sub>13x</sub>,  
 C<sub>33x</sub>, C<sub>63x</sub>, C<sub>53</sub>, C<sub>43x</sub>,  
 C<sub>83x</sub>

### MODEL

|  | IX 145 - ..  | 50     | 70       |
|--|--|--------|----------|
| Useful output at 50/30°C Pn (heating mode)                                       | kW   | 48.6   | 70.2     |
| Efficiency at ...%   | - 100% Pn at average temp. 70°C<br>- 30% Pn at return temp. 30°C | 97.4   | 97.2     |
|  |  | 108.4  | 108.1    |
| Seasonal space heating energy efficiency (without contribution of regulation)    | %  | 93     | 93       |
| Seasonal space heating energy efficiency (with outdoor sensor original delivery) | %  | 95     | 95       |
| Min.-max. useful output at 80/60°C (heating mode)                                | kW   | 5 - 45 | 7.2 - 65 |
| Water flow at ΔT = 20 K (80/60°C)  | m <sup>3</sup> /h  | 1.94   | 2.8      |
| Minimum flow rate  | l/h  | 800    | 1500     |
| Water content  | L  | 2.8    | 4.9      |
| Max. flue gas temperature  | °C   | 92     | 76       |
| Stand-by losses at ΔT = 30 K   | W  | 45     | 46       |
| Auxiliary electrical power (ex. heating pump) at Pn                              | W  | 100    | 117      |
| Electrical power in stand-by   | W  | 3      | 3        |
| Noise output   | dB(A)  | 61     | 64       |
| Flue gas pressure available (max.)   | mbar   | 2.7    | 2.7      |
| Net weight   | kg   | 60     | 70       |

### MODEL

|         | IX 145 - .. | 50      | 70      |
|---------|-------------|---------|---------|
| Package |             | JL151   | JL152   |
| Ref.    |             | 7693900 | 7694352 |

# GAS

FLOOR-STANDING GAS CONDENSING EQUIPPED BOILERS, FOR HEATING ONLY



Fully-equipped compact versions  
Easy hydraulic connection

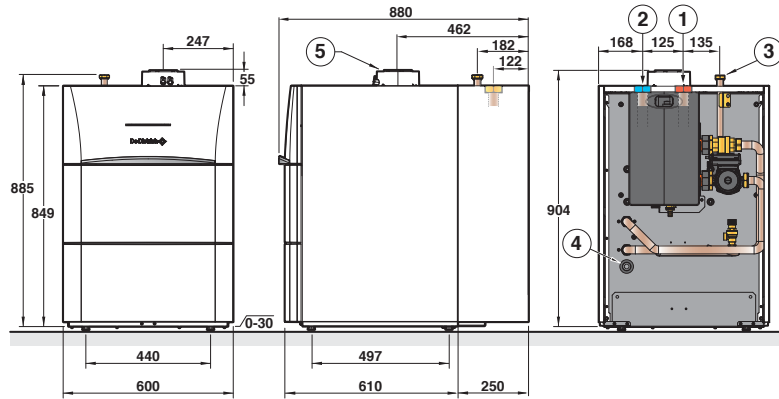


## IX 145 SH - 50 and IX 145 SH - 70 from 5.4 to 70.2 kW



IX 145 SH - 50 and 70 boilers equipped with a pre-dimensioned hydraulic low-loss header kit comprising:

- A modulating pump actuated via PWM signal
- An insulated low-loss header
- Connection pipes to the boiler with a non-return valve and a safety valve. Secondary side pipes leading to the top of the boiler for easy connection
- Packaging: 2 packages



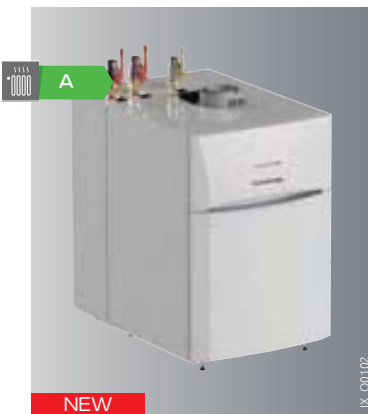
IX\_F0009

### MODEL

IX 145 SH - 50  
IX 145 SH - 70

IX 145 SH - ..

Ref. 7713880  
Ref. 7713881

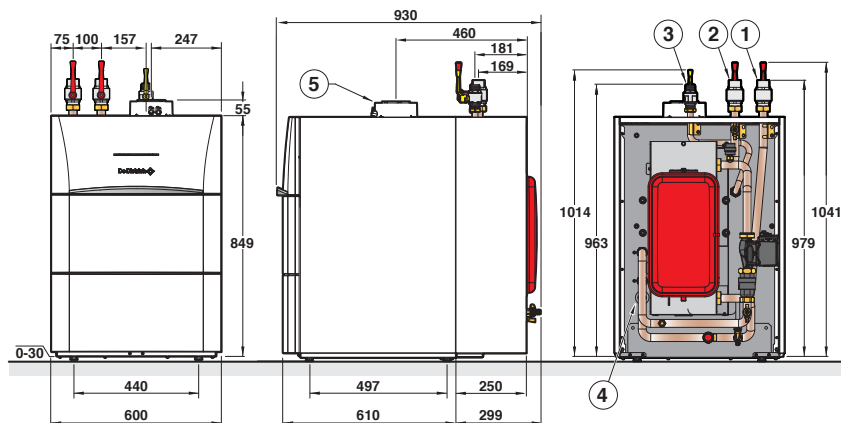


## IX 145 EP - 50 and IX 145 EP - 70 from 5.4 to 70.2 kW



IX 145 EP - 50 and 70 boilers equipped with a pre-dimensioned hydraulic low-loss header kit comprising:

- A modulating pump actuated via PWM signal, a non-return valve
- An automatic degassing device (primary side)
- An expansion vessel
- A plate heat exchanger with insulated low-loss header
- Connection pipes to the boiler with a non-return valve and a 4-bar safety valve (primary side). Secondary side pipes with isolation valves leading to the top for easy connection.
- Packaging: 2 packages



IX\_F0005

### MODEL

IX 145 EP - 50  
IX 145 EP - 70

IX 145 EP - ..

Ref. 7713888  
Ref. 7713889

NOTA: dimensions and legends: see opposite

### PROJECT



NEW

IX\_Q01.03

## IX 145 - 90 and IX 145 - 110

from 10.2 to 110.2 kW



Gas-fired condensing solution  
Compact  
Stainless steel heating body



- Floor-standing boiler, equipped to run on natural gas
- Can be adapted on propane using a conversion kit
- Low pollutant emissions
- Electronic ignition
- Austenitic stainless steel (316 L) coil exchanger
- Stainless steel fully premixed gas burner, modulating
- Electronic modulation from 1 to 9
- Flame detection using ionisation
- Temperature control and management using 2 CTN thermistors on the flow and return
- Continuously modulating gas valve (in heating mode and DHW production mode)

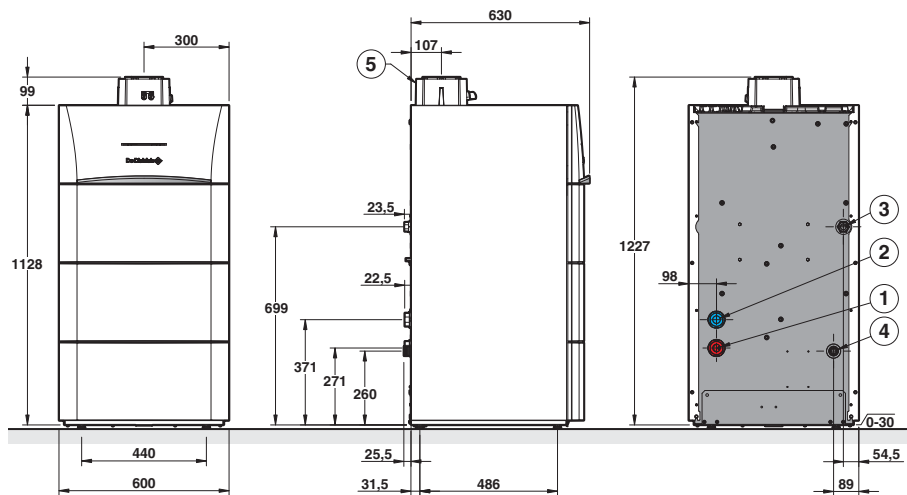
- Post-circulation, flow control and low water device
- Backlit panel with dropdown menu and clear text. 3 operating modes, easy access to the boiler parameters, malfunction alerts with fault codes, fault history and diagnostic help. Enables management of a DHW circuit and a direct circuit. Can control up to 3 circuits (with control system options).
- Delivery with outdoor temperature sensor
- Packaging: 1 package

N° CE 0085CP089

**OPTIONS:** see following pages / **FLUE SYSTEMS:** see following pages

### MAIN DIMENSIONS (mm and inches)

- Heating flow:
    - IX 145-...: G 1" 1/2
    - IX 145-... SH: G 1" 1/2
    - IX 145-... EP: G 1" 1/4
  - Heating return:
    - IX 145-...: G 1" 1/2
    - IX 145-... SH: G 1" 1/2
    - IX 145-... EP: G 1" 1/4
  - Power supply gas:
    - IX 145-...: G 1"
    - IX 145-... SH: G 1"
    - IX 145-... EP: G 1"
  - Condensates drain (Ø 22 mm outside)
  - Evacuation of combustion products and air inlet pipe Ø 110/160 mm
- G: External cylindrical threading water tightness by flat gasket.



IX\_F0002

### TECHNICAL SPECIFICATIONS

#### Condensing

Max. operating temperature: 80°C  
Max. operating pressure: 4 bar  
Safety thermostat: 110°C

Power supply: 230 V/50 Hz  
Protection index: IP X1B  
NOx classification: 6

Classification: B<sub>23</sub>, B<sub>23P</sub>, B<sub>33</sub>, C<sub>13x</sub>,  
C<sub>33x</sub>, C<sub>63x</sub>, C<sub>53x</sub>, C<sub>43x</sub>,  
C<sub>83x</sub>

### MODEL

|   | IX 145 - ..  | 90       | 110        |
|---|--|----------|------------|
| Useful output at 50/30°C Pn (heating mode)          | kW   | 91.8     | 110.2      |
| Efficiency at ...%<br>and ...°C water temperature   | - 100% Pn at average temp. 70°C<br>- 30% Pn at return temp. 30°C | %        | 97.3       |
|   |  | %        | 97.2       |
| Useful efficiency at 100% of rated heat output      | %  | 108.2    | 108.1      |
| Useful efficiency at 30% of rated heat output       | %  | 87.7     | 87.6       |
| Min.-max. useful output at 80/60°C (heating mode)   | kW   | 9.4 - 85 | 11.4 - 102 |
| Water flow at ΔT = 20 K (80/60°C)                   | m³/h   | 3.6      | 4.4        |
| Minimum flow rate                                   | l/h  | 2000     | 2250       |
| Water content                                       | L  | 8.3      | 9.8        |
| Max. flue gas temperature                           | °C   | 70       | 70         |
| Stand-by losses at ΔT = 30 K                        | W  | 62       | 72         |
| Auxiliary electrical power (ex. heating pump) at Pn | W  | 146      | 185        |
| Electrical power in stand-by                        | W  | 3        | 3          |
| Noise output  | dB(A)  | 65       | 64         |
| Flue gas pressure available (max.)                  | mbar   | 3.2      | 3.7        |
| Net weight  | kg   | 104      | 109        |

### MODEL

|         | IX 145 - .. | 90      | 110     |
|---------|-------------|---------|---------|
| Package |             | JL153   | JL154   |
| Ref.    |             | 7689867 | 7693601 |

# GAS

FLOOR-STANDING GAS CONDENSING EQUIPPED BOILERS, FOR HEATING ONLY



Fully-equipped compact versions  
Easy hydraulic connection

O2

GAS



NEW

IX\_Q0105

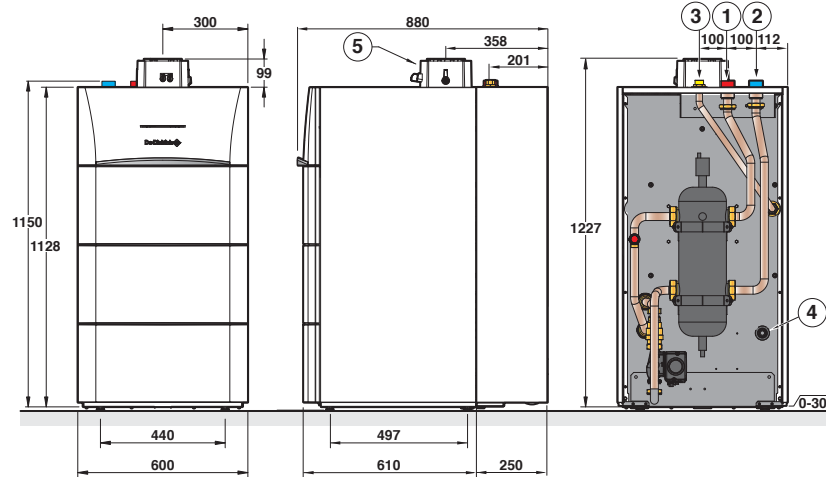
## IX 145 SH - 90 and IX 145 SH - 110 from 10.2 to 110.2 kW



IX 145 SH - 90 and 110 boilers equipped with a pre-dimensioned hydraulic low-loss header kit comprising:

- A modulating pump actuated via PWM signal
- An insulated low-loss header

- Connection pipes to the boiler with a non-return valve and a safety valve. Secondary side pipes leading to the top of the boiler for easy connection
- Packaging: 2 packages



IX\_F0010

### MODEL

IX 145 SH - 90  
IX 145 SH - 110

IX 145 SH - ..

Ref. 7713882  
Ref. 7713883



NEW

IX\_Q0106

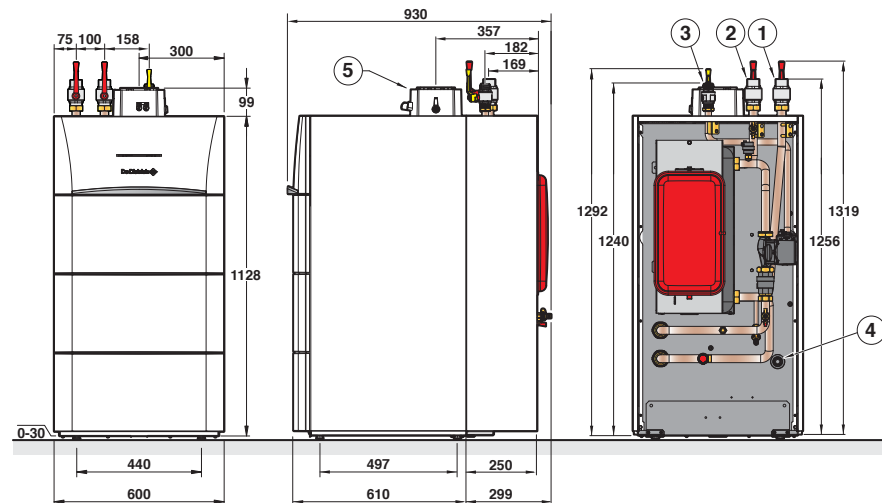
## IX 145 EP - 90 and IX 145 EP - 110 from 10.2 to 110.2 kW



IX 145 EP - 90 and 110 boilers equipped with a pre-dimensioned hydraulic low-loss header kit comprising:

- A modulating pump actuated via PWM signal, a non-return valve
- An automatic degassing device (primary side)
- An expansion vessel
- A plate heat exchanger with insulated low-loss header

- Connection pipes to the boiler with a non-return valve and a 4-bar safety valve (primary side). Secondary side pipes with isolation valves leading to the top for easy connection.
- Packaging: 2 packages



IX\_F0006

### MODEL

IX 145 EP - 90  
IX 145 EP - 110

IX 145 EP - ..

Ref. 7713890  
Ref. 7713891

NOTA: dimensions and legends: see opposite

### PROJECT



## IX 245 - 130 and IX 245 - 150

from 33.1 to 150.9 kW



Gas-fired condensing solution  
Stainless steel heating body



- Floor-standing boiler, equipped to run on natural gas
- Can be adapted on propane using the diaphragm provided
- Low pollutant emissions
- Electronic ignition
- Austenitic stainless steel (316 L) coil exchanger
- Stainless steel fully premixed gas burner, modulating
- Electronic modulation from 1 to 6
- Flame detection using ionisation
- Temperature control and management using 2 CTN thermistors on the flow and return

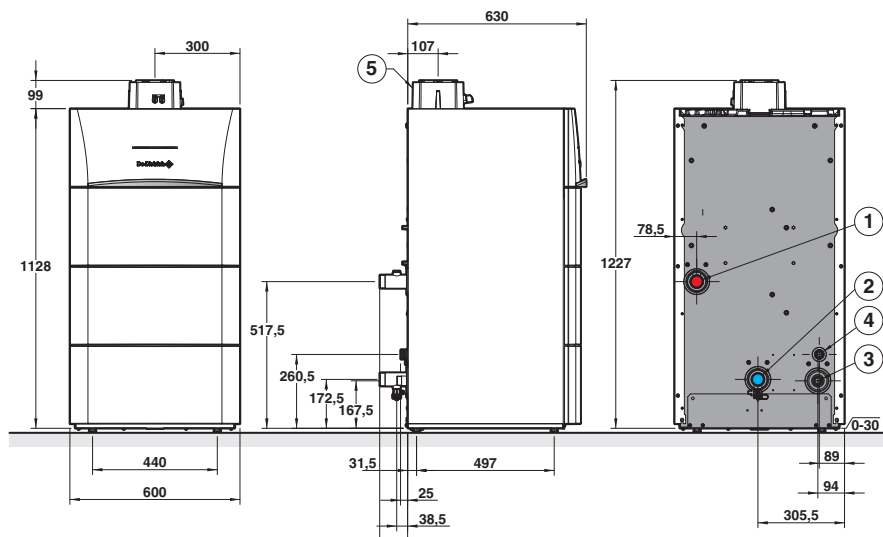
- Continuously modulating gas valve (in heating mode and DHW production mode)
- Post-circulation, flow control and low water device
- Backlit panel with dropdown menu and clear text. 3 operating modes, easy access to the boiler parameters, malfunction alerts with fault codes, fault history and diagnostic help. Enables management of a DHW circuit and a direct circuit. Can control up to 3 circuits (with control system options).
- Delivery with outdoor temperature sensor
- Packaging: 1 package

N° CE 0085CP0089

**OPTIONS:** see following pages / **FLUE SYSTEMS:** see following pages

### MAIN DIMENSIONS (mm and inches)

- Heating flow:
    - IX 145...: G 1" 1/2
    - IX 145... SH: G 2" 1/4
    - IX 145... EP: G 2"
  - Heating return:
    - IX 145...: G 1" 1/2
    - IX 145... SH: G 2" 1/4
    - IX 145... EP: G 2"
  - Power supply gas:
    - IX 145...: G 1"
    - IX 145... SH: G 1" 1/2
    - IX 145... EP: G 1"
  - Condensates drain (Ø 22 mm outside)
  - Evacuation of combustion products and air inlet pipe Ø 110/160 mm
- G: External cylindrical threading water tightness by flat gasket.



### TECHNICAL SPECIFICATIONS

#### Condensing

Max. operating temperature: 80°C  
 Max. operating pressure: 6 bar  
 Safety thermostat: 110°C

Power supply: 230 V/50 Hz  
 Protection index: IP 21  
 NOx classification: 6

Classification: B<sub>23</sub>, B<sub>23P</sub>, B<sub>33</sub>, C<sub>13x</sub>, C<sub>33x</sub>, C<sub>63x</sub>, C<sub>53</sub>, C<sub>43x</sub>, C<sub>83x</sub>

### MODEL

|   | IX 245 - ..                       | 130                             | 150          |
|---|-----------------------------------|---------------------------------|--------------|
| Useful output at 50/30°C Pn (heating mode)          | kW                                | 130.6                           | 150.9        |
| Efficiency at ...% and ...°C water temperature      | % - 100% Pn at average temp. 70°C | 98.1                            | 98.1         |
|   |                                   | % - 30% Pn at return temp. 30°C | 108.5        |
| Useful efficiency at 100% of rated heat output      | %                                 | 88.4                            | 88.4         |
| Useful efficiency at 30% of rated heat output       | %                                 | 97.8                            | 97.8         |
| Min.-max. useful output at 80/60°C (heating mode)   | kW                                | 24.3 - 121.5                    | 28.1 - 140.3 |
| Water flow at ΔT = 20 K (80/60°C)                   | m <sup>3</sup> /h                 | 5.6                             | 6.0          |
| Minimum flow rate                                   | l/h                               | 2250                            | 3000         |
| Water content                                       | L                                 | 10                              | 11           |
| Max. flue gas temperature                           | °C                                | 70                              | 70           |
| Stand-by losses at ΔT = 30 K                        | W                                 | 77.7                            | 83.3         |
| Auxiliary electrical power (ex. heating pump) at Pn | W                                 | 187                             | 283          |
| Electrical power in stand-by                        | W                                 | 4.3                             | 4.3          |
| Flue gas pressure available (max.)                  | mbar                              | 1.70                            | 2.80         |
| Net weight  | kg                                | 126                             | 132          |

### MODEL

|         | IX 245 - .. | 130     | 150     |
|---------|-------------|---------|---------|
| Package |             | JL155   | JL156   |
| Ref.    |             | 7695340 | 7695343 |

# GAS

FLOOR-STANDING GAS CONDENSING EQUIPPED BOILERS, FOR HEATING ONLY



Fully-equipped compact versions  
Easy hydraulic connection

O2

GAS



NEW

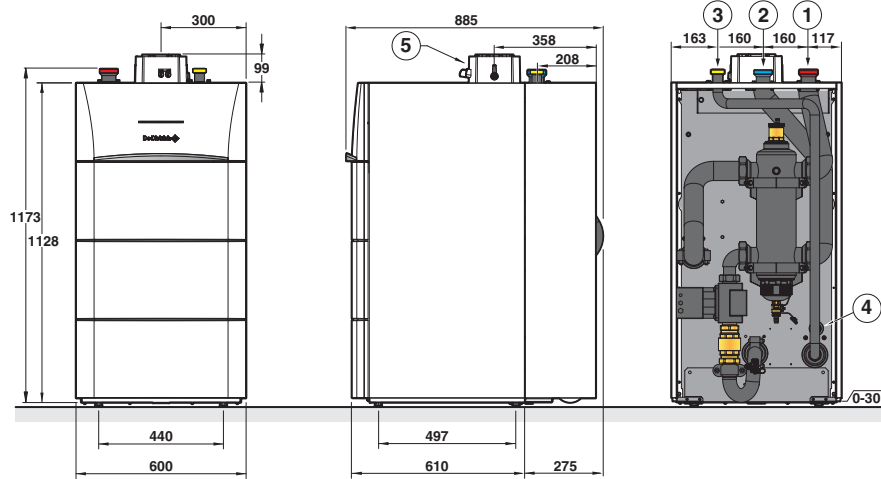
IX\_Q0104

## IX 245 SH - 130 and IX 245 SH - 150 from 33.1 to 150.9 kW



IX 245 SH - 130 and 150 boilers equipped with a pre-dimensioned hydraulic low-loss header kit comprising:

- A modulating pump actuated via PWM signal
- An insulated low-loss header
- Connection pipes to the boiler with a non-return valve and a safety valve. Secondary side pipes leading to the top of the boiler for easy connection
- Packaging: 2 packages



### MODEL

IX 245 SH - 130  
IX 245 SH - 150

IX 245 SH - ..

Ref. 7713884  
Ref. 7713885



NEW

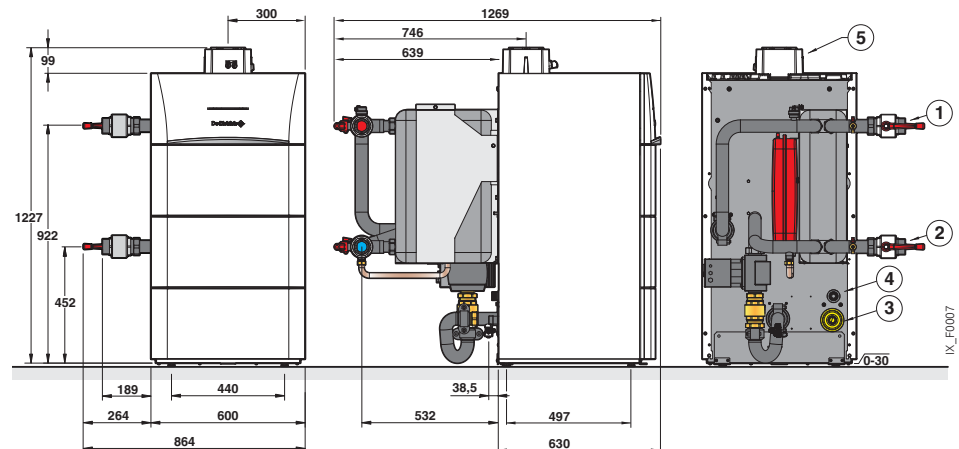
IX\_Q0107

## IX 245 EP - 130 and IX 245 EP - 150 from 33.1 to 150.9 kW



IX 245 EP - 130 and 150 boilers equipped with a pre-dimensioned hydraulic low-loss header kit comprising:

- A modulating pump actuated via PWM signal, a non-return valve
- An automatic degassing device (primary side)
- An expansion vessel
- A plate heat exchanger with insulated low-loss header
- Connection pipes to the boiler with a non-return valve and a 4-bar safety valve (primary side). Secondary side pipes with isolation valves leading to the side for easy connection.
- Packaging: 2 packages



### MODEL

IX 245 EP - 130  
IX 245 EP - 150

IX 245 EP - ..

Ref. 7713892  
Ref. 7713893

NOTA: dimensions and legends: see opposite

# GAS

FLOOR-STANDING GAS CONDENSING BOILERS FOR HEATING ONLY

PROJECT



NEW

## IX 245 - 200 and IX 245 - 250 from 33.1 to 250 kW

point

Gas-fired condensing solution  
Stainless steel heating body



- Floor-standing boiler, equipped to run on natural gas
- Can be adapted on propane using the diaphragm provided
- Low pollutant emissions
- Electronic ignition
- Austenitic stainless steel (316 L) coil exchanger
- Stainless steel fully premixed gas burner, modulating
- Electronic modulation from 1 to 6
- Flame detection using ionisation
- Temperature control and management using 2 CTN thermistors on the flow and return

- Continuously modulating gas valve (in heating mode and DHW production mode)
- Post-circulation, flow control and low water device
- Backlit panel with dropdown menu and clear text. 3 operating modes, easy access to the boiler parameters, malfunction alerts with fault codes, fault history and diagnostic help. Enables management of a DHW circuit and a direct circuit. Can control up to 3 circuits (with control system options).
- Boiler equipped with wheels to enable it to be easily installed in the boiler room.
- Delivery with outdoor temperature sensor
- Packaging: 1 package

N° CE 0085CP0089

**OPTIONS:** see following pages / **FLUE SYSTEMS:** see following pages

### MAIN DIMENSIONS (mm and inches)

- ① Heating flow:  
- IX 145...: G 2"  
- IX 145... SH: DN50 PN6  
- IX 145... EP: G 2"

- ② Heating return:  
- IX 145...: G 2"  
- IX 145... SH: DN50 PN6  
- IX 145... EP: G 2"

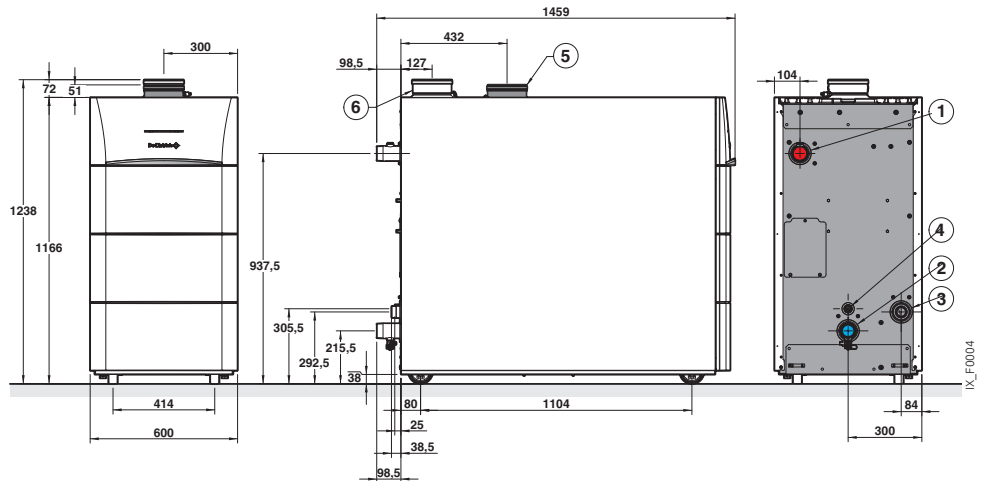
- ③ Power supply gas:  
- IX 145...: G 1" 1/2  
- IX 145... SH: G 1" 1/2  
- IX 145... EP: G 1" 1/2

- ④ Condensates drain (Ø 22 mm outside)

- ⑤ Air inlet connection Ø 150 mm

- ⑥ Evacuation of combustion products Ø 150 mm

G: External cylindrical threading water tightness by flat gasket.



### TECHNICAL SPECIFICATIONS

#### Condensing

Max. operating temperature: 90°C  
Max. operating pressure: 6 bar  
Safety thermostat: 110°C

Power supply: 230 V/50 Hz  
Protection index: IP 21  
NOx classification: 6

Classification: B<sub>23</sub>, B<sub>23P</sub>, B<sub>33</sub>, C<sub>13</sub>, C<sub>33</sub>,  
C<sub>63</sub>, C<sub>53</sub>, C<sub>43</sub>, C<sub>83</sub>

### MODEL

|   | IX 245 - ..  | 200          | 250          |       |
|---|--|--------------|--------------|-------|
| Useful output at 50/30°C Pn (heating mode)          | kW   | 200          | 250          |       |
| Efficiency at ...% and ...°C water temperature      | - 100% Pn at average temp. 70°C<br>- 30% Pn at return temp. 30°C | %            | 97.3         | 97.0  |
|   |  | %            | 109.1        | 109.1 |
| Useful efficiency at 100% of rated heat output      | %  | 87.7         | 87.4         |       |
| Useful efficiency at 30% of rated heat output       | %  | 98.2         | 98.2         |       |
| Min.-max. useful output at 80/60°C (heating mode)   | kW   | 31.0 - 185.9 | 38.8 - 232.8 |       |
| Water flow at ΔT = 20 K (80/60°C)                   | m³/h   | 8.0          | 10.0         |       |
| Minimum flow rate                                   | l/h  | 3500         | 4500         |       |
| Water content                                       | L  | 13           | 15           |       |
| Max. flue gas temperature                           | °C   | 90           | 90           |       |
| Stand-by losses at ΔT = 30 K                        | W  | 95.3         | 117.3        |       |
| Auxiliary electrical power (ex. heating pump) at Pn | W  | 242          | 369          |       |
| Electrical power in stand-by                        | W  | 4.3          | 4.3          |       |
| Flue gas pressure available (max.)                  | mbar   | 2.30         | 2.30         |       |
| Net weight  | kg   | 212          | 232          |       |

### MODEL

|         | IX 245 - .. | 200     | 250     |
|---------|-------------|---------|---------|
| Package |             | JL157   | JL158   |
| Ref.    |             | 7695347 | 7695348 |

# GAS

FLOOR-STANDING GAS CONDENSING EQUIPPED BOILERS, FOR HEATING ONLY



Fully-equipped compact versions  
Easy hydraulic connection

O2

GAS



NEW

IX\_Q0110

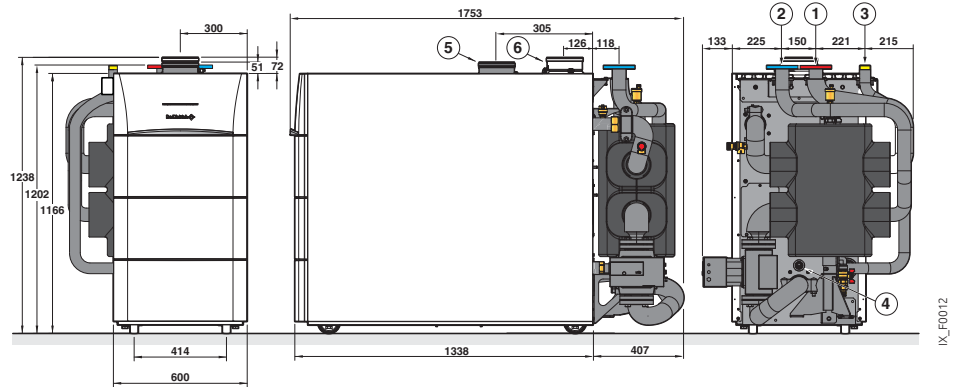
## IX 245 SH - 200 and IX 245 SH - 250 from 33.1 to 250 kW



IX 245 SH - 200 et 250 boilers equipped with a pre-dimensioned hydraulic low-loss header kit comprising:

- A modulating pump actuated via PWM signal
- An insulated low-loss header

- Connection pipes to the boiler with a non-return valve and a safety valve. Secondary side pipes leading to the top of the boiler for easy connection
- Packaging: 2 packages



IX\_F0012

### MODEL

IX 245 SH - 200  
IX 245 SH - 250

IX 245 SH - ..

Ref. 7713886  
Ref. 7713887



NEW

IX\_Q0109

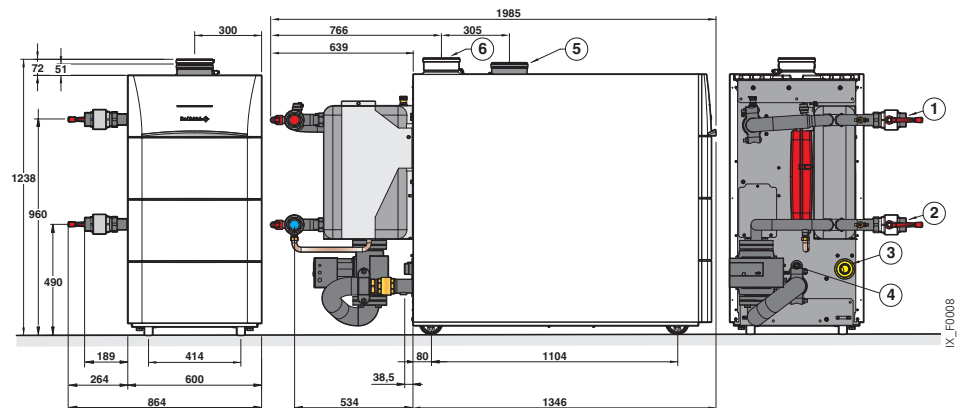
## IX 245 EP - 200 and IX 245 EP - 250 from 33.1 to 250 kW



IX 245 EP - 200 et 250 boilers equipped with a pre-dimensioned hydraulic low-loss header kit comprising:

- A modulating pump actuated via PWM signal, a non-return valve
- An automatic degassing device (primary side)
- An expansion vessel
- A plate heat exchanger with insulated low-loss header

- Connection pipes to the boiler with a non-return valve and a 4-bar safety valve (primary side). Secondary side pipes with isolation valves leading to the side for easy connection.
- Packaging: 2 packages



IX\_F0008

### MODEL

IX 245 EP - 200  
IX 245 EP - 250

IX 245 EP - ..

Ref. 7713894  
Ref. 7713895

NOTA: dimensions and legends: see opposite



# OPTIONS

FOR IX 145 - ... AND IX 245 - ...

## CASCADE SYSTEMS

### CASCADES WITH 2 BOILERS

#### CASCADE KITS WITH 2 BOILERS

|   | IX 145 - 50    | IX 145 - 70    | IX 145 - 90    | IX 145 - 110   | IX 245 - 130   | IX 245 - 150   | IX 245 - 200   | IX 245 - 250   |
|---|----------------|----------------|----------------|----------------|----------------|----------------|----------------|----------------|
| Complete cascade set with 2 boilers * <b>Ref.</b> | <b>7713924</b> | <b>7713925</b> | <b>7713926</b> | <b>7713927</b> | <b>7713928</b> | <b>7713929</b> | <b>7713930</b> | <b>7713931</b> |

\* The cascade kit comprises: 2 boilers, the hydraulic collector (flow/return), connection kits (pump + connection pipes on the boilers), blind flanges (ends), the low-loss header with its connection, mounting brackets, flue gas non-return valves with siphon, 2 BUS modules, a flow sensor and a return sensor.

#### CASCADE KITS FOR 1 ADDITIONAL BOILER

|  | IX 145 - 50    | IX 145 - 70    | IX 145 - 90    | IX 145 - 110   | IX 245 - 130   | IX 245 - 150   | IX 245 - 200   | IX 245 - 250   |
|--|----------------|----------------|----------------|----------------|----------------|----------------|----------------|----------------|
| Complete cascade set with 1 boiler * <b>Ref.</b> | <b>7713896</b> | <b>7713897</b> | <b>7713898</b> | <b>7713899</b> | <b>7713920</b> | <b>7713921</b> | <b>7713922</b> | <b>7713923</b> |

\* The cascade kit comprises: 1 boiler, the hydraulic collector (flow/return), the connection kit (pump + connection pipes on the boiler), mounting brackets, flue gas non-return valve with siphon and BUS module, hardware kit.

### CASCADES WITH 3 BOILERS

Cascade to be built from one cascade of 2 boilers and 1 cascade kit for an additional boiler (see above).

|  | IX 145 - 50    | IX 145 - 70    | IX 145 - 90    | IX 145 - 110   | IX 245 - 130   | IX 245 - 150   | IX 245 - 200   | IX 245 - 250 |
|--|----------------|----------------|----------------|----------------|----------------|----------------|----------------|--------------|
| Complete cascade set with 2 boilers * <b>Ref.</b>        | <b>7713924</b> | <b>7713925</b> | <b>7713926</b> | <b>7713927</b> | <b>7713928</b> | <b>7713929</b> | <b>7713930</b> | <b>(1)</b>   |
| Complete cascade set for 1 additional boiler <b>Ref.</b> | <b>7713896</b> | <b>7713897</b> | <b>7713898</b> | <b>7713899</b> | <b>7713920</b> | <b>7713921</b> | <b>7713922</b> | <b>(1)</b>   |

(1) Cannot be created with assemblies. To be composed per package; see below. Hydraulic separator must be resized.

### CASCADE WITH 4 BOILERS

Cascade to be built from one cascade of 2 boilers and 2 cascade kits for an additional boiler (see above).

|  | IX 145 - 50        | IX 145 - 70 | IX 145 - 90        | IX 145 - 110       | IX 245 - 130       | IX 245 - 150       | IX 245 - 200 | IX 245 - 250 |
|--|--------------------|-------------|--------------------|--------------------|--------------------|--------------------|--------------|--------------|
| Complete cascade set with 2 boilers * <b>Ref.</b>        | <b>7713924</b>     | <b>(1)</b>  | <b>7713926</b>     | <b>7713927</b>     | <b>7713928</b>     | <b>7713929</b>     | <b>(2)</b>   | <b>(2)</b>   |
| Complete cascade set for 1 additional boiler <b>Ref.</b> | <b>2 x 7713896</b> | <b>(1)</b>  | <b>2 x 7713898</b> | <b>2 x 7713899</b> | <b>2 x 7713920</b> | <b>2 x 7713921</b> | <b>(2)</b>   | <b>(2)</b>   |

(1) Cannot be created with assemblies. To be composed per package; see below.

(2) Cannot be created with assemblies. To be composed per package; see below. Hydraulic separator must be resized.

## PACKAGE LIST TO BE ORDERED BASED ON THE REQUIRED COMBINATION

### FLUE SYSTEMS

|  | PACKAGE | REF.            |
|--|---------|-----------------|
| Ø 80/110 mm valve kit with siphon for IX 145 - 50/70   | DY433   | <b>7715074</b>  |
| Ø 110/110 mm valve kit with siphon for IX 145 - 90/110 | DY432   | <b>7715073</b>  |
| Extension kit PPS Ø 80 mm (lg 250 mm) (2 pieces)       | DY613   | <b>84887613</b> |
| Extension kit PPS Ø 110 mm (lg 500 mm)                 | DY180   | <b>84887580</b> |

### DESIGNATION

|  | PACKAGE | REF.           |
|--|---------|----------------|
| Low-loss header:                             |         |                |
| • 8.5 m³/h                                   | JL245   | <b>7713944</b> |
| • 18 m³/h                                    | JL246   | <b>7713945</b> |
| • 28 m³/h                                    | JL247   | <b>7713946</b> |
| • 30 m³/h                                    | JL260   | <b>7694133</b> |
| Boiler flow/return collector kit:            |         |                |
| • For IX 145 - 50/70/90//110                 | JL240   | <b>7709439</b> |
| • For IX 245 - 130/150/200/250               | JL250   | <b>7694126</b> |
| Boiler-collector connection kit (with pump): |         |                |
| • For IX 145 - 50/70                         | JL207   | <b>7702798</b> |
| • For IX 145 - 90/110                        | JL208   | <b>7703583</b> |
| • For IX 245 - 130/150                       | JL254   | <b>7694142</b> |
| • For IX 245 - 200/150                       | JL255   | <b>7674803</b> |

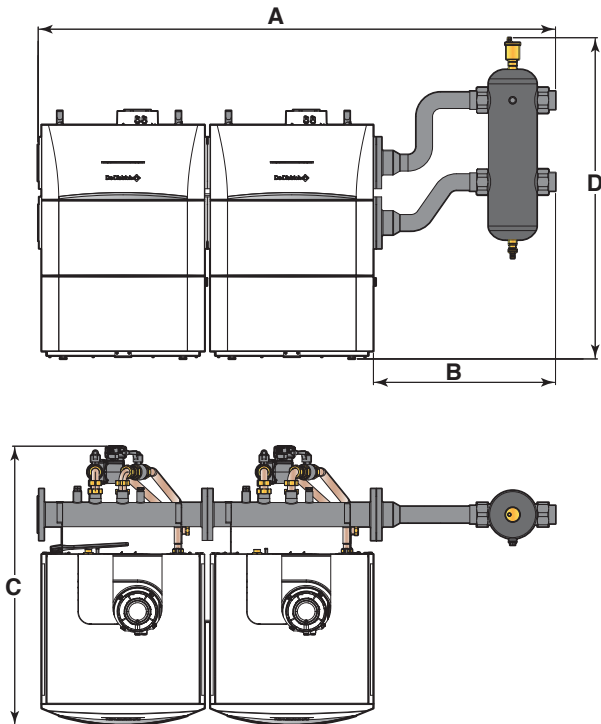
### DESIGNATION

|   | PACKAGE | REF.           |
|---|---------|----------------|
| Low-loss header connection kit:                   |         |                |
| • 8.5 m³/h  | JL242   | <b>7713941</b> |
| • 18 m³/h   | JL243   | <b>7713942</b> |
| • 28 m³/h   | JL244   | <b>7713943</b> |
| Set of 2 blind flanges for collector with IX 145  | JL241   | <b>7713940</b> |
| Set of 2 caps for collector with IX 245           | JL261   | <b>7694136</b> |
| DN 65 counterflange (for 18 m³/h low-loss header) | JL248   | <b>7713947</b> |
| DN 80 counterflange (for 28 m³/h low-loss header) | JL249   | <b>7713948</b> |
| Hardware and gaskets (8.5 m³/h)                   | JL238   | <b>7716445</b> |
| Hardware and gaskets (18 m³/h)                    | JL239   | <b>7716444</b> |
| Universal sensor (flow...) 2 m in length          | SA48    | <b>7709436</b> |
| OCI 345 Bus communication module for cascade      | SA50    | <b>7709438</b> |

# OPTIONS

FOR IX 145 AND IX 245

## MAIN DIMENSIONS OF A CASCADE OF 2 TO 4 BOILERS (mm)



IX\_F0013

### CASCADE OF BOILERS

|                   | A (mm) | B (mm) | C (mm) | D (mm)    |
|-------------------|--------|--------|--------|-----------|
| Number of boilers | 2      | 3      | 4      | 2, 3 ou 4 |
| IX 145 - 50       | 1901   | 2521   | 3141   | 669       |
| IX 145 - 70       | 1901   | 2521   | 3141   | 669       |
| IX 145 - 90       | 2054   | 2674   | 3294   | 822       |
| IX 145 - 110      | 2054   | 2674   | 3294   | 822       |
| IX 245 - 130      | 2213   | 2953   | 3693   | 636       |
| IX 245 - 150      | 2213   | 2953   | 3693   | 636       |
| IX 245 - 200      | 2213   | 2953   | 3693   | 636       |
| IX 245 - 250      | 2213   | 2953   | 3693   | 636       |

## ALL OPTIONS EXCEPT CONTROL UNITS OPTIONS

### BOILER ACCESSORIES

|  | PACKAGE | REF.      |
|--|---------|-----------|
| Condensates neutralisation system (without pump)   |         |           |
| • DN 1 (up to 75 kW)                               | SA1     | 7613605   |
| • DN 2.0 (up to 450 kW)                            | SA3     | 7613609   |
| • DN 3.0 (up to 1300 kW)                           | SA9     | 7622188   |
| Wall bracket for neutralisation station DN1        | SA2     | 7613606   |
| Condensates neutralization system (with lift pump) |         |           |
| • boilers < 120 kW                                 | DU13    | 83877009  |
| • boilers up to 300 kW                             | SA4     | 7613610   |
| • boilers > 350 kW up to 1300 kW                   | DU15    | 83877011  |
| Neutralization granules (10 kg)*                   | -       | 94225601  |
| Neutralization granules (25 kg)                    | SA7     | 7613613   |
| Gas pressure regulator 300 mbar:                   |         |           |
| • GDJ 15 (from 40 to 150 kW) Ø 1/2"                | SA11    | 7628752   |
| • GDJ 20 (from 150 to 340 kW) Ø 3/4"               | SA12    | 7628753   |
| • GDJ 25 (from 340 to 700 kW) Ø 1"                 | AD245   | 100011223 |
| • GDJ 50 (from 700 to 1400 kW) Ø 2"                | AD246   | 88027177  |
| Conversion kit propane:                            |         |           |
| • For IX 145 - 50                                  | JL400   | 7716148   |
| • For IX 145 - 70                                  | JL401   | 7716149   |
| • For IX 145 - 90                                  | JL402   | 7716150   |
| • For IX 145 - 110                                 | JL403   | 7716151   |
| Conversion kit G25                                 |         |           |
| • For IX 145 - 50                                  | JL404   | 7716152   |
| • For IX 145 - 70                                  | JL405   | 7716153   |
| • For IX 145 - 90                                  | JL406   | 7716154   |
| • For IX 145 - 110                                 | JL407   | 7716155   |

\* To ordered at the spare parts department

### BOILER ACCESSORIES

|  | PACKAGE | REF.    |
|--|---------|---------|
| Low-loss header kits:                      |         |         |
| • For IX 145 - 50/70                       | JL203   | 7695069 |
| • For IX 145 - 90/110                      | JL204   | 7698937 |
| • For IX 245 - 130/150                     | JL270   | 7663934 |
| • For IX 245 - 200/250                     | JL271   | 7672216 |
| Separation kits with plate heat exchanger: |         |         |
| • For IX 145 - 50/70                       | JL205   | 7699167 |
| • For IX 145 - 90/110                      | JL206   | 7700738 |
| • For IX 245 - 130/150                     | JL280   | 7680549 |
| • For IX 245 - 200/250                     | JL281   | 7680558 |

### DHW PRODUCTION

|   | PACKAGE | REF.               |
|---|---------|--------------------|
| • with independant calorifier                   |         | See chapters 10-11 |
| • with solar caloririfer                        |         | See chapter 12     |
| Universal pocket sensor (DHW...), 6 m in length | SA49    | 7709437            |

### BOILER ROOM EQUIPMENT

See chapter 17

### FLUE SYSTEMS

See following pages

# OPTIONS AND EXAMPLES OF INSTALLATIONS

FOR IX 145 - ... AND IX 245 - ...

## CONTROL UNITS OPTIONS

### CHOICE OF OPTIONS ACCORDING TO THE CONNECTED CIRCUITS

| Circuit type (1)  | DHW        | direct   | vanne       | direct + valve | 2 x valve | direct + 2 x valve | 3 x valve |                     |
|-------------------|------------|----------|-------------|----------------|-----------|--------------------|-----------|---------------------|
| Control panel (2) | IX 145/245 | 1 x SA49 | as standard | 1 x SA45       | 1 x SA45  | 2 x SA45           | 2 x SA45  | 2 x SA45 + 1 x SA44 |

(1) Each of the "heating" circuits can be completed by a remote control SA47

(2) Cascade with 4 boilers possible. Each boiler of the cascade can manage one direct circuit and 2 circuits with mixing valve (with 2 x option SA45).

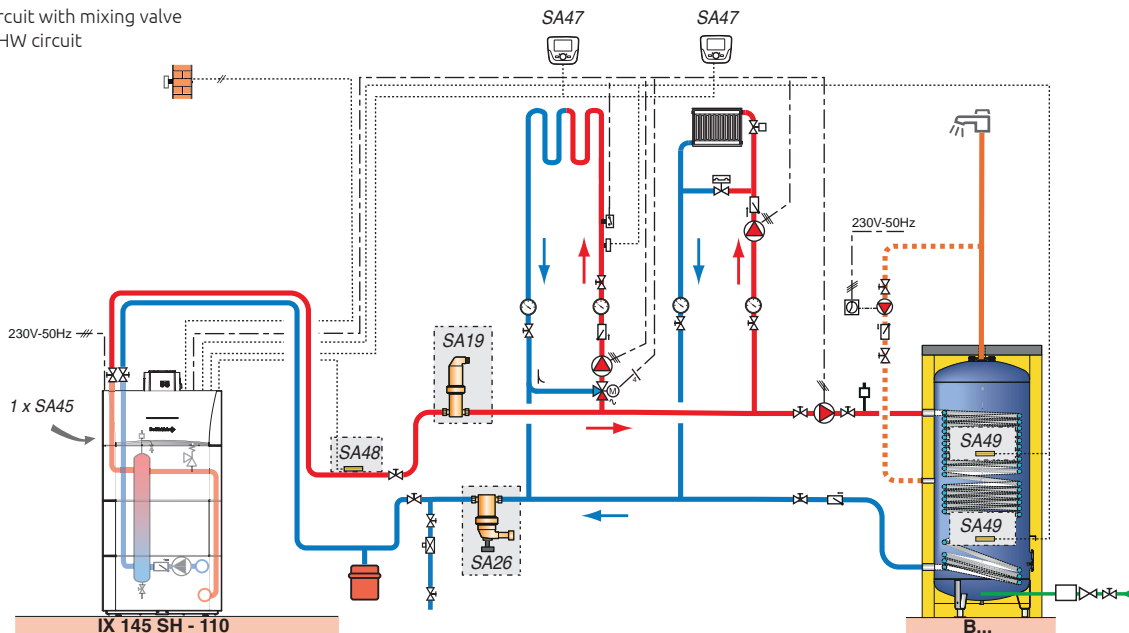
## CONTROL UNITS

|   | PACKAGE | REF.    |   | PACKAGE | REF.    |
|---|---------|---------|---|---------|---------|
| Programmable room sensor (wired)                          | SA47    | 7712268 | OCI 345 Bus communication module for cascade            | SA50    | 7709438 |
| Universal sensor (flow...) 2 m in length                  | SA48    | 7709436 | MEWN three-way valve circuit control module, integrated | SA45    | 7695736 |
| Universal pocket sensor (DHW...) 6 m in length            | SA49    | 7709437 | Web server:   |         |         |
| Outside sensor QAC34                                      | HX94    | 7670186 | • OZW 672.01 (for 1 boiler)                             | SA51    | 7718358 |
| Wall-mounted control system (VM HSM)                      | SA43    | 7695735 | • OZW 672.04 (for 4 boilers)                            | SA52    | 7718359 |
| MEWN three-way valve circuit control module, wall-mounted | SA44    | 7695737 | • OZW 672.16 (for 16 boilers)                           | SA53    | 7718380 |

## EXAMPLE FOR IX 145 - ...

### IX 145 SH - 110

- 1 direct circuit
- 1 circuit with mixing valve
- 1 DHW circuit



## DESCRIPTION

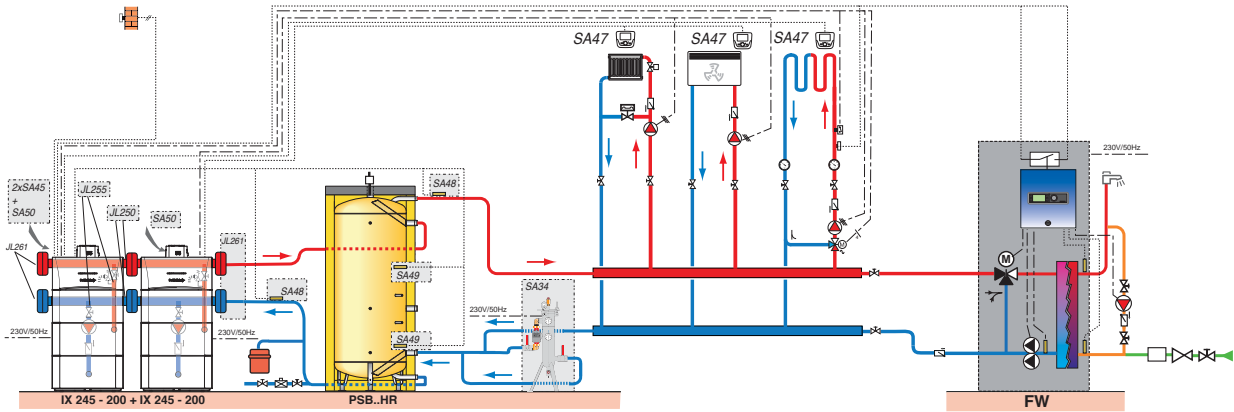
|   | PACKAGE  | REF.    |
|---|----------|---------|
| IX 145 SH - 110 boiler                                  | -        | 7713883 |
| MEWN three-way valve circuit control module, integrated | SA45     | 7695736 |
| Universal sensor (flow...) 2 m in length                | SA48     | 7709436 |
| 2 x universal pocket sensor (DHW...) 6 m in length      | 2 x SA49 | 7709437 |
| 2 x programmable room sensor (wired)                    | 2 x SA47 | 7712268 |
| Brass microbubble degasser Rp 2"                        | SA19     | 7650334 |
| Brass sludge separator Rp 2"                            | SA26     | 7650378 |
| B 1000 tank   | AJ80     | 7650482 |
| Rigid casing for B 1000                                 | AJ97     | 7650499 |

# EXAMPLES OF INSTALLATION

FOR IX 245 - ...

## Cascade from 2 x IX 245 – 200

- 2 direct circuits
- 1 circuit with mixing valve
- 1 circuit with instantaneous DHW production
- 1 heating water storage tank

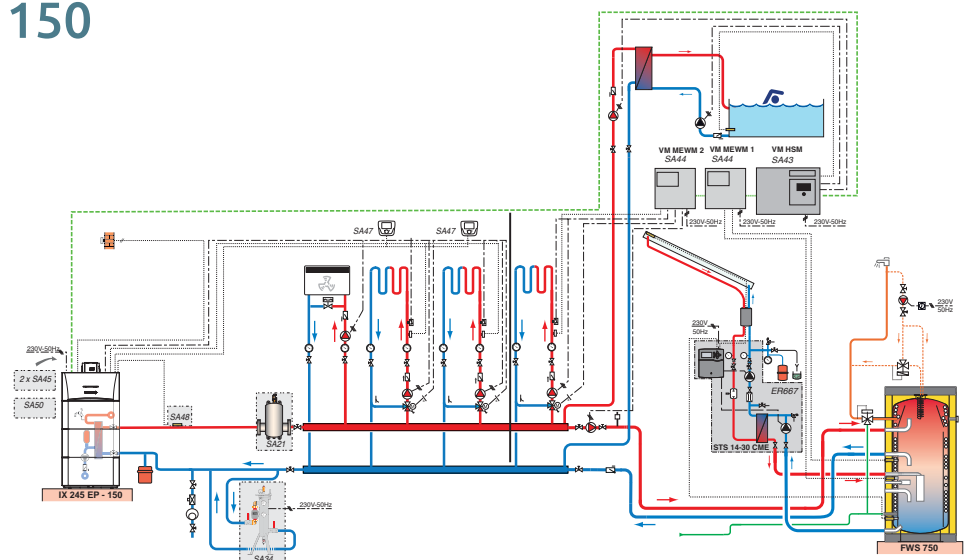


### DESCRIPTION

|   | PACKAGE   | REF.           |
|---|-----------|----------------|
| 2 x IX 245 - 200 boilers                                    | 2 x JL157 | <b>7695347</b> |
| 2 x MEWN three-way valve circuit control module, integrated | 2 x SA45  | <b>7695736</b> |
| 2 x OCI 345 Bus communication module for cascade            | 2 x SA50  | <b>7709438</b> |
| 2 x universal sensor (flow...) 2 m in length                | 2 x SA48  | <b>7709436</b> |
| Set of 2 caps for collector with IX 245                     | JL261     | <b>7694136</b> |
| 2 x boiler flow/return collector kit 200/250 kW             | 2 x JL250 | <b>7694126</b> |
| 2 x boiler-collector connection kit (with pump)             | 2 x JL255 | <b>7674803</b> |
| 2 x Universal pocket sensor (DHW...) 6 m in length          | 2 x SA49  | <b>7709437</b> |
| 3 x programmable room sensor (wired)                        | 3 x SA47  | <b>7712268</b> |
| PSB 1000 tank   | AJ54      | <b>7650456</b> |
| Rigid casing for PSB 1000 tank                              | AJ89      | <b>7650491</b> |
| Stainless steel clarifier unit DN32 (9 m³/h)                | SA34      | <b>7651698</b> |
| FWPC 3027-250   | EC770     | <b>7661872</b> |

## IX 245 EP – 150

- 1 direct circuit
- 3 circuits with mixing valve
- 1 solar circuit
- 1 circuit with swimming pool



### DESCRIPTION

|   | PACKAGE  | REF.           |
|---|----------|----------------|
| IX 245 EP - 150 boiler  | -        | <b>7713893</b> |
| 2 x MEWN three-way valve circuit control module, integrated   | SA45 2 x | <b>7695736</b> |
| OCI 345 Bus communication module for cascade                  | SA50     | <b>7709438</b> |
| Universal sensor (flow...) 2 m in length                      | SA48     | <b>7709436</b> |
| 2 x programmable room sensor (wired)                          | SA47 2 x | <b>7712268</b> |
| Steel microbubble degasser DN65                               | SA21     | <b>7650338</b> |
| Stainless steel clarifier unit DN32 (9 m³/h)                  | SA34     | <b>7651698</b> |
| 2 x MEWN three-way valve circuit control module, wall-mounted | SA44 2 x | <b>7695737</b> |
| Wall-mounted control system (VM HSM)                          | SA43     | <b>7695735</b> |
| Instantaneous hot water calorifier FWS 750                    | EC800    | <b>7696903</b> |